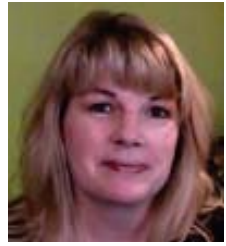


Laure Ferlita's

FIERY SUNSET AT THE BEACH

WWW.IMAGINARYTRIPS.COM



Sunsets, especially those with bold, saturated colors seem like they would be impossible to capture in our sketchbooks and journals, but they're much easier than you think! There's very little drawing involved, but there is lots of fun in the form of brilliant, bold color. This artwork uses a limited palette of six colors.



Art Journaling

ARTIST
EXPERIENCE
LEVEL:

ALL SKILL LEVELS

**SATURDAY,
FEBRUARY 11
9:00AM-12:30PM**

\$35 PER
STUDENT

ALL ART SUPPLIES AVAILABLE FOR PURCHASE IN OUR RETAIL STORE



KEETON'S
Office & Art Supply

941-747-2995
keetonsonline.com
817 Manatee Ave W
Bradenton, FL 34205

Laure Ferlita's

FIERY SUNSET AT THE BEACH

SUPPLY LIST



Please note, **NEW** recommended supplies in **red** below. ******The two most important paints to have are the Indanthrone blue and the Pyrrol Orange.

5.5" x 8.5" Arches Cold Press 140 lb. paper (or a pieces of Arches cut to the same size as your journal page if you would like to put it into your journal. We will be using tape on our paper. You can test to see if your paper will tear by putting a piece of clear tape down, burnish the edge and then see if you can lift it without tearing the edge. If it tears, bring a piece of Arches.)

- Mechanical Pencil
- White Uni-ball® Signo Pen*
*Be sure to have a white Uni-ball Signo Pen (available at Keeton's)
- Kneaded Eraser and White Eraser
- #7 or 8 round brush OR a Large waterbrush
- Small #2 or 4 round brush OR a Small waterbrush
- Facial Tissues
- 3/4" Clear office tape (like the tape you would use when wrapping a present) - it can be satin or glossy—it doesn't matter
- Watercolors* - All Daniel Smith:
 - **Indanthrone Blue****-PB60
 - Carbazole Violet-PV23 RS
 - **Pyrrol Orange****-PO73
 - Quinacridone Pink-PV19
 - Isoindolinone Yellow-PY139,
 - Azo Yellow-Py151 -or- Hansa Yellow Medium-PY97 (choose one)

Paint should be out on a palette and ready to go rather than in tubes.

*It is possible you already have these pigments on your palette, but they may be under a different brand name. Compare the pigment numbers to see if you already own them.

Optional Supplies

Permanent Ink Markers in Orange and Reds

White Sharpie® Poster Paint Pen in a Fine Tip

Pen Recommendations: Faber Castell® Pitt® Pens, Pigma® Micron® and Prismacolor. Caution: Sharpie® markers can bleed through your paper months after you use them.